

CS-1000

HEAD SHELL

Phasemation

Owner's Manual

Thank you for purchasing Phasemation CS-1000, Head Shell.

CS-1000 is produced to match phono pick up cartridges with universal arms in the best condition. For the best performance and product durability, please read the following instructions carefully to follow the proper use of CS-1000 before setting up.

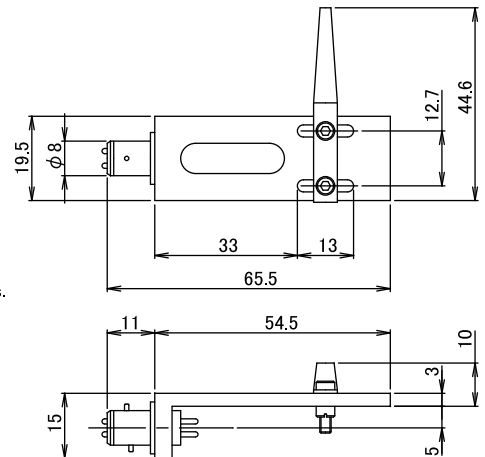
● Installation

1. Connect the shell lead wires and cartridge terminal with the correct poles.
2. Fix the cartridge on the shell at the overhung position designated by the pick up arm. When tightening the screws, please pay attention to the balance of left and right at the cartridge installation position.
3. Install the shell on the pick up arm without any left and right slant.
(Rubber ring installed at the terminal is not attached since it is better not to use it for the good sound quality.)
4. Please avoid touching the terminal where the shell lead wires are plugged in or the connector terminal with bare hands directly.
It will quicken the inferior sound quality from the corrosion or the connection degradation.
5. Please adjust the height and the needle pressure of the pick up arm.

● Specifications

1. Material Duralumin
2. Treatment DLC (Diamond Like Carbon) treatment
3. Weight 13.8g
(including lead wires, finger hook,
screw for installation of cartridge: M2.6 × 10, nut, washer)
4. Lead wires LITZ wires
(high purity copper wires coated with polyurethane)

■ Dimensions and specifications might be changed without notice for the improvement of products.



Dimensions figure(mm)

● Enclosed

1. Lead wires (LITZ wire) : 4 wires
2. Finger hook (Resonance Dispersion Shape) : 1 piece
3. Screws for installation : 2 pieces each
(M2.6x6, M2.6x10, M2.6x16)
4. Nuts for installation : 2 pieces (Aluminums)
5. Washer : 4 pieces
6. Hexagonal wrench for screws for tightening : 1 piece

● Information

Please note that all sides of CS-1000 have DLC treatment, but only the back side (the side for putting on the cartridge) has no luster finishing.

Phasemation

Kyodo Denshi Engineering Co., Ltd.

8-40-17 Shinyoshidahigashi, Kohoku-ku, Yokohama, Kanagawa, 223-0058 Japan

TEL 81-45-710-0975

FAX 81-45-710-0976

URL <http://phasemation.com>

Phasemation is the original audio brand of Kyodo Denshi Engineering Co., Ltd.